

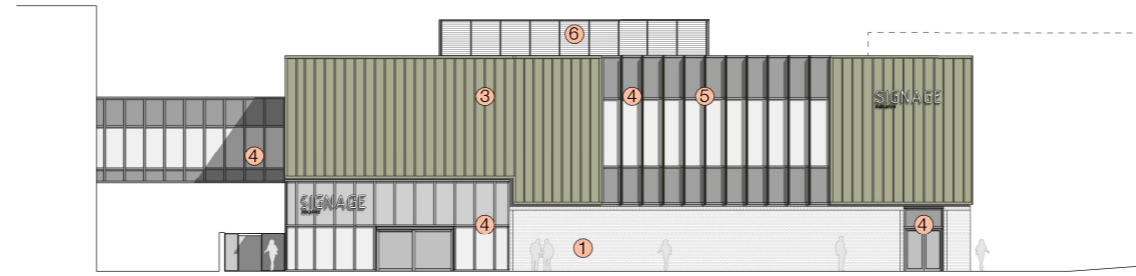
The use of this data by the recipient acts as an agreement of the following statements. Do not use this data if you do not agree with any of the following statements:-

All drawings are based upon site information supplied by third parties and as such their accuracy cannot be guaranteed. All features are approximate and subject to clarification by a detailed topographical survey, statutory service enquiries and confirmation of the legal boundaries.

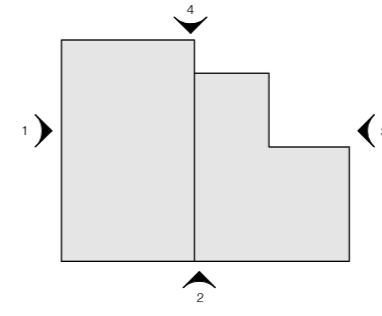
The controlled version of this drawing should be viewed in DWG or PDF format not DWG or other formats. All prints of this drawing must be made in full colour.

Where this drawing has been based upon Ordnance Survey data, it has been reproduced under the terms of Ryder Licence No. 10000144. Reproduction of this drawing in whole or in part is prohibited without the prior permission of Ordnance Survey.

Do not scale the drawings. Use figured dimensions in all cases. Check all dimensions on site. Report any discrepancies in writing to Ryder before proceeding.

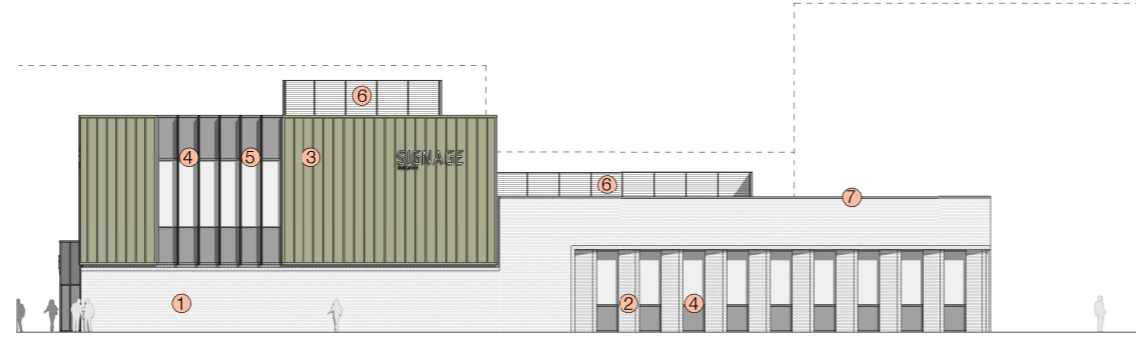


1 Northern Elevation  
1:200

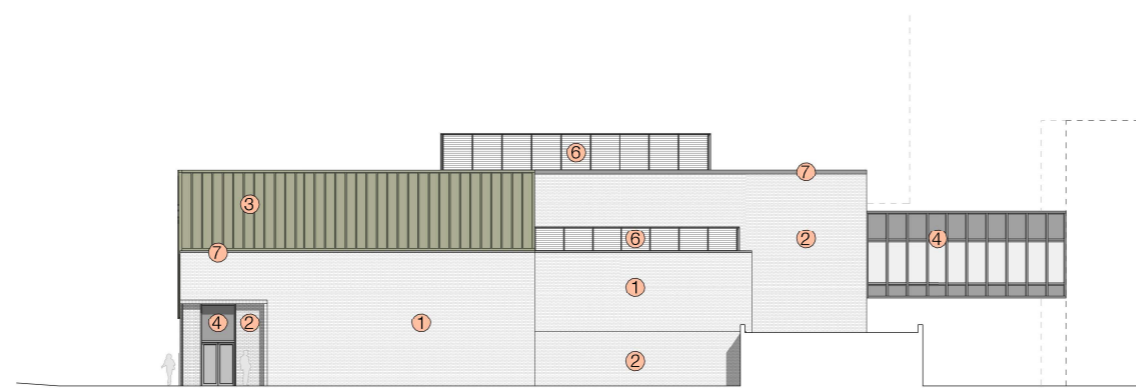


Please refer to Thornaby Pavilion: Planning Exterior Elevation Building Materials Schedule for material references.

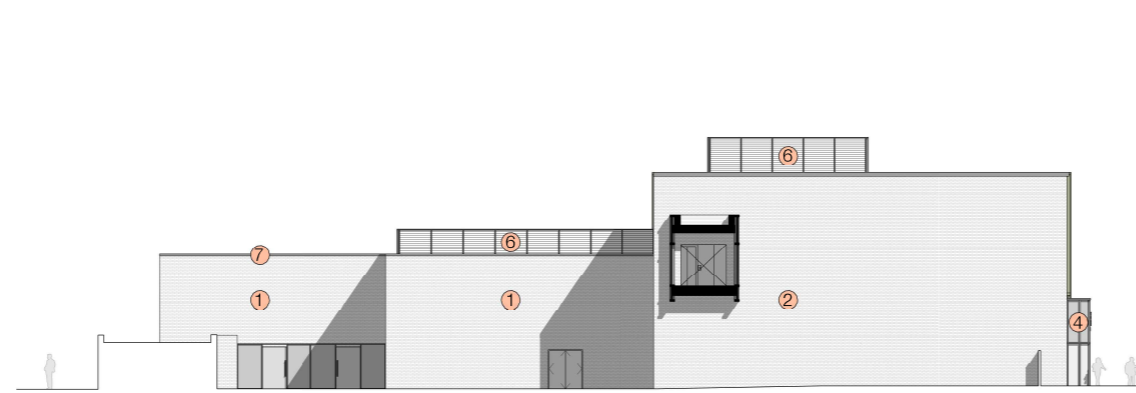
THP-RYD-XX-XX-LSH-A-0002-S2-P01



2 Eastern Elevation  
1:200



3 Southern Elevation  
1:200



4 Western Elevation  
1:200

P7	Planning Issue	MDU	SDO	10/07/24
P6	Draft Revision for Planning	MDU	SDO	26/06/24
P5	Entrance elevation updated, Colour added	STH	SDO	20/06/24
P4	TAL updates incorporated	SDO	RGR	13/06/24
P3	General Design Updates	MDU	SDO	06/06/24
P2	Pre-application Final Issue	MDU	SDO	30/05/24
P1	First Issue	STH	RGR	17/05/24
Rev.	Description	Drawn	Checked	Date

Amendment  
Suitability  
Information

Project  
Stockton-on-Tees Borough Council  
Thornaby  
Thornaby Pavilion

Drawing  
GA Elevations

Project ID	Originator	Zone	Level	Type	Revs	Number
THP	- RYD -	00	ZZ	- DDR -	A	- 3300
Ryder Project No.	Scale at A2	Status	Revision			
11271-00	1:200	S2	P7			